



## PETALPALOOZA TAKES OVER THE WHARF

*Former "Southwest Waterfront Fireworks Festival" takes a new shape*

**O**n Saturday, April 7 from 1 to 9:30

p.m., the inaugural Petalpalooza presented by FreshDirect will make its highly anticipated debut at The Wharf, DC's newest half-mile-long waterfront destination. Formerly known as the Southwest Waterfront Fireworks Festival, Petalpalooza will include interactive art installations, larger-than-life games and activities, live music on three outdoor stages, a roller rink, a beer garden, a spectacular fireworks show by Pyrotecnico, and much more along the piers of the Southwest Waterfront, the "home of the cherry blossoms."

Enjoy more than eight energetic hours of live music on three waterfront stages, including the DC Lottery Main Stage, a floating "202 Stage" showcasing DC's homegrown talent, and an Acoustic Lounge. On the Fresh Direct 202 Pier, attendees will let the good times roll in the free roller skating rink, with special roller dancer performances throughout the day.

All are encouraged to release their inner Picasso with bike spin art, Japanese calligraphy, Gytaku fish prints, plein air artists, and more. Plus, there will be



no shortage of selfie-worthy snapshots, including an interactive "flower-by-numbers" wall and life-sized photo frames.

In the Samuel Adams Beer Garden on the District Pier and Transit Pier, guests can stay hydrated with free samples from LaCroix and Coca-Cola soft drinks for sale. FreshDirect will be giving away special snack packs for attendees, L'Occitane En Provence cherry blossom product samples will be distributed from the L'Occitruke, and children can make their own T-shirts with Harbor Patrol. Even four-legged friends can join the festivities with special amenities for dogs at Petalpalooza's Pop-Up Parklet, sponsored by Mars Petcare and its Better Cities for Pets™ program.

Of course, the fireworks tradition lives on, as a dazzling choreographed display of more than 4,000 effects will light up

DC's night sky above the Washington Channel.

Several DC-based artists will be featured throughout Petalpalooza's programming thanks to a grant awarded to the National Cherry Blossom Festival by the DC Commission on the Arts and Humanities, including the following:

- Performances by DC-based bands La Unica, Broke Royals, and AZTEC SUN on the 202 Stage
- A "Flower by Number" interactive visual art installation featuring DC-based artist Kellie Cox
- A roller skating rink with skating performances by DC-based dancers
- Two DC-based plein air artists: Samantha Testa and Kasey O'Boyle
- A fireworks prelude performance by DC's own StepAfrika!

This initiative was designed to honor the roots of the event, which was created in 2004 by and for the Southwest DC community. In 2018 the event moves into a new venue—the long-awaited Southwest Waterfront redevelopment project, The Wharf. To reinforce the community's sense of identity at this long-standing event as it enters a new chapter of life in its new home, Southwest DC residents have been given special recognition through the 202 Pier area of the event, both as participating artists and attendees.

**Read the rest of this story and more at <http://thesouthwester.com>**

Amidon-Bowen Parents Tell Mayor and Chancellor: Stop Shortchanging Our Children

Page 2



THERE'S A PARTY GOIN' ON

Page 6



COMMUNITY CALENDAR

Page 10

**For more on the goings on of Southwest this month, see [TheSouthwester.com](http://TheSouthwester.com) for stories on SWNA's Youth Activities Task Force and Technology Task Force, as well as a wrap up from the Annual Black History meeting.**

**[www.TheSouthwester.com](http://www.TheSouthwester.com)**



# Amidon-Bowen Parents Tell Mayor and Chancellor: Stop Shortchanging Our Children

BY: GRACE HU AND BETSY WOLF

On March 8, parents at Amidon-Bowen Elementary School launched a campaign to lobby Mayor Muriel Bowser and DC Public Schools (DCPS) Interim Chancellor Amanda Alexander to provide additional funding to our Southwest neighborhood elementary school. Parents identified two main sources of these problems. First, Bowser's 2018-19 budget did not provide enough funds to the school district as a whole to keep up with inflation and other higher costs. Second, the school district failed to provide a fair share of funding to higher-need schools such as Amidon-Bowen. The combination of these poor decisions threatens the education of our Southwest neighborhood children at a time when the school is making significant progress.

Although Amidon-Bowen is classified by the school district as a "priority school" needing intense support to address low student performance, this year's budget continues a pattern of underfunding staffing, classroom information technology, and other needs.

Below are excerpts from parents' emails sent to DCPS and/or city officials. To preserve the integrity of the budget process, which has not been completed at the time of this article's submission, we

have excluded information on specific cuts being discussed.

"I am writing to alert you to the unacceptable budget cuts at Amidon-Bowen Elementary School and to implore you to provide Amidon-Bowen with additional funding for the upcoming school year. I am a parent at Amidon-Bowen, and I am concerned that if DCPS does not increase our budget, it will hurt our students' education and further entrench the inequality plaguing DC and DCPS." –Betsy W. and Ava M.

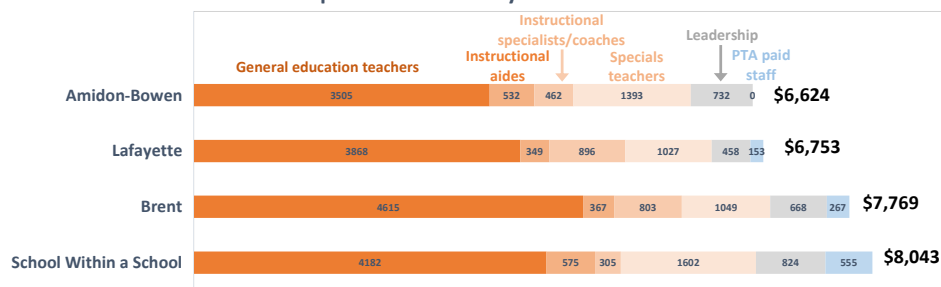
"My son is in PreK-4 and has thrived at [Amidon-Bowen]. He is in a loving, supported environment which will deteriorate considerably under the new budget. I know ours is not the only family that will feel the negative repercus-

sions. [Amidon-Bowen] has evolved so much since we moved to Southwest in 2012, and ... this is an inopportune time to slash resources." –Sylvia C.

"A key to the future success of this neighborhood will be the success of Amidon's students. To best equip Amidon's students and SWDC for success, the school should continue its broad base education program. I not only hope that DC budgeting will find room in its budget allocation to accommodate [current levels of staffing], but that additional funds will be allocated to ensure the school can continue to improve." –Daniel W.

"The bottom line is this: Amidon-Bowen serves a highly 'at risk' population and needs more funding than schools not facing similar challenges, yet it actually receives *less* instructional funding on

Dollars Spent Per Student by DCPS on Instructional Personnel



a per-student basis than a number of wealthier schools. If one cross-references school staff directories with DC public employee salary information, it shows that DCPS is spending hundreds, and in some cases thousands, of dollars more per student on instructional staff salaries at certain schools serving children from affluent backgrounds than on children attending Amidon-Bowen. If DC and DCPS are committed to equality in educational opportunities, something has to change." –Betsy W. and Ava M.

"DCPS has said that promoting equity is a priority. And yet it continues to underfund schools like Amidon-Bowen that serve a high-need student population. ... I hope that you can find a way to assist Amidon, so that it continues to be a school that enriches the lives of our children and one the neighborhood wants to attend. I am also copying the ANC reps for where I reside, as well as where Amidon is located." –Laura M.

"Yes, I know that the mayor's budget press release trumpeted 'an additional \$105 million to increase the per student rate and meet the needs of a growing student body.' Here's what else I know: According to the DC Fiscal Policy insti-

See "Amidon-Bowen," page 8

## The Southwester

Circulation 13,000

Send submissions and questions to *The Southwester* by e-mail at [editor@thesouthwester.com](mailto:editor@thesouthwester.com). Submissions for each monthly issue are due on the 15th of the preceding month.

For advertising information and rates, see [www.thesouthwester.com/advertising.pdf](http://www.thesouthwester.com/advertising.pdf) or contact [ads@thesouthwester.com](mailto:ads@thesouthwester.com)

Remittance address for ad payments only is:

**The Southwester**

P.O. Box 70131 • Washington, DC 20024

### Southwester Staff

Editor Emeritus: Dale MacIver

Editor-in-Chief: Shannon Vaughn

Editorial Staff: Julia Cole (Copy & Web);

Maya Renee (Calendar)

Advertising: Donna Purchase

Distribution: Perry Klein

Design & Layout: Electronic Ink

Printer: Chesapeake Printing



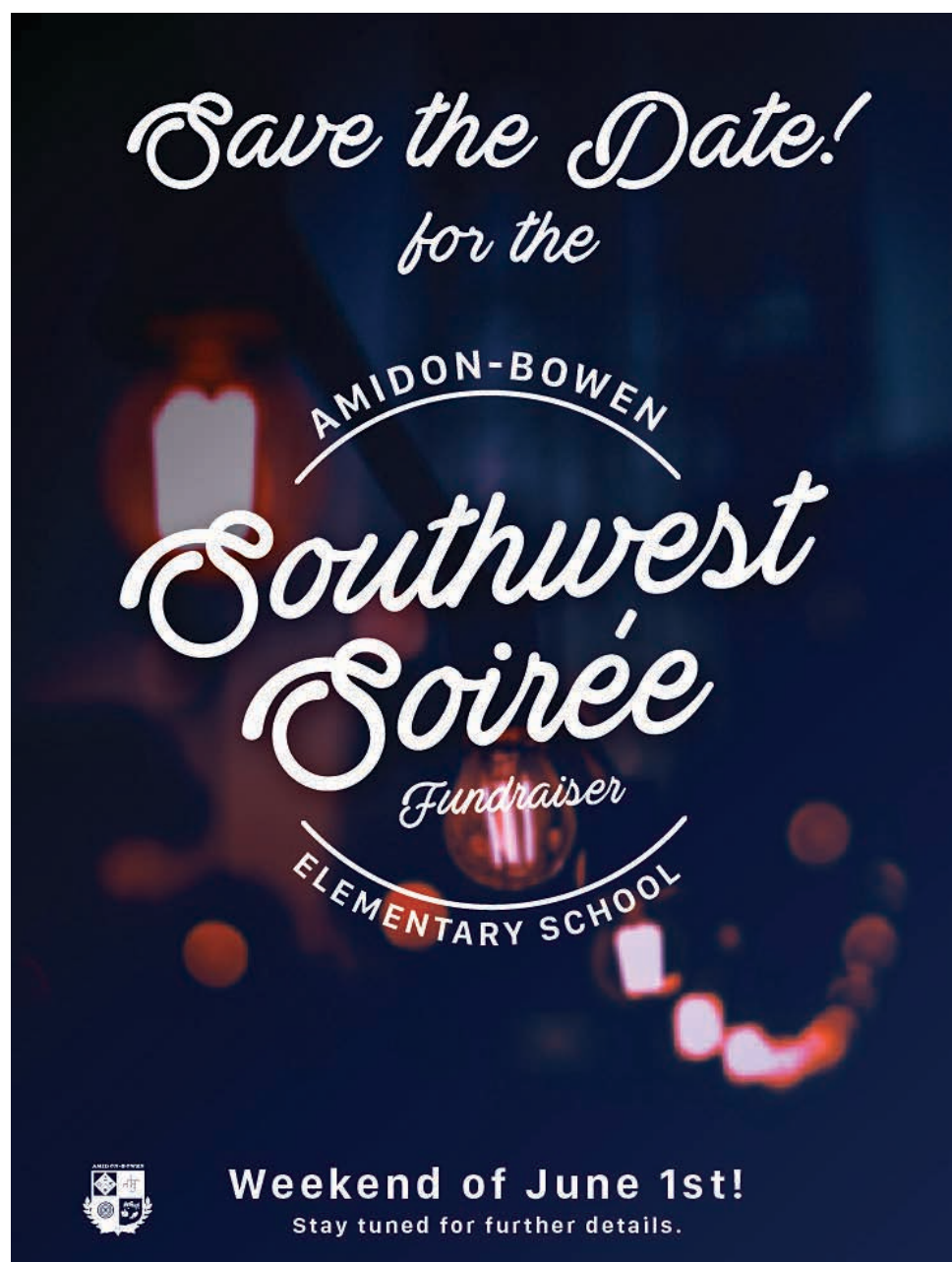
The Southwester is published and distributed by the Southwest Neighborhood Assembly

For Southwest Neighborhood Assembly financial reports, please see <http://goo.gl/pQYCd>

Donate to us: <http://www.razoo.com/story/Southwest-Neighborhood-Assembly>

Copyright © 2018 Southwest Neighborhood Assembly, Inc. All rights reserved.

To contact the Southwest Neighborhood Assembly or *The Southwester*, call (202) 437-1700.



Save the Date!  
for the  
AMIDON-BOWEN  
Southwest Soirée  
Fundraiser  
ELEMENTARY SCHOOL  
Weekend of June 1st!  
Stay tuned for further details.



HELP  
SAVE  
LIVES  
IN THE  
DISTRICT  
By supporting

### The Thelma D. Jones Breast Cancer Fund

The Thelma D. Jones Breast Cancer Fund was created to help reduce the high number of breast cancer cases and high death rates among our region's most vulnerable residents. With your help, we can reduce the rate of cases and number of deaths from breast cancer.

Donations support outreach and education strategies that link low-income, uninsured and underinsured women with information, screening and diagnostic services.

Gifts may be made by sending check, money order or credit card authorization to the Southwest Renaissance Development Corporation at the address listed below.

When donating by mail, please make check or money order payable to the Southwest Renaissance Development Corporation and write The Thelma D. Jones Breast Cancer Fund on the memo line.

### Southwest Renaissance Development Corporation

400 I Street, SW  
Washington, DC 20024

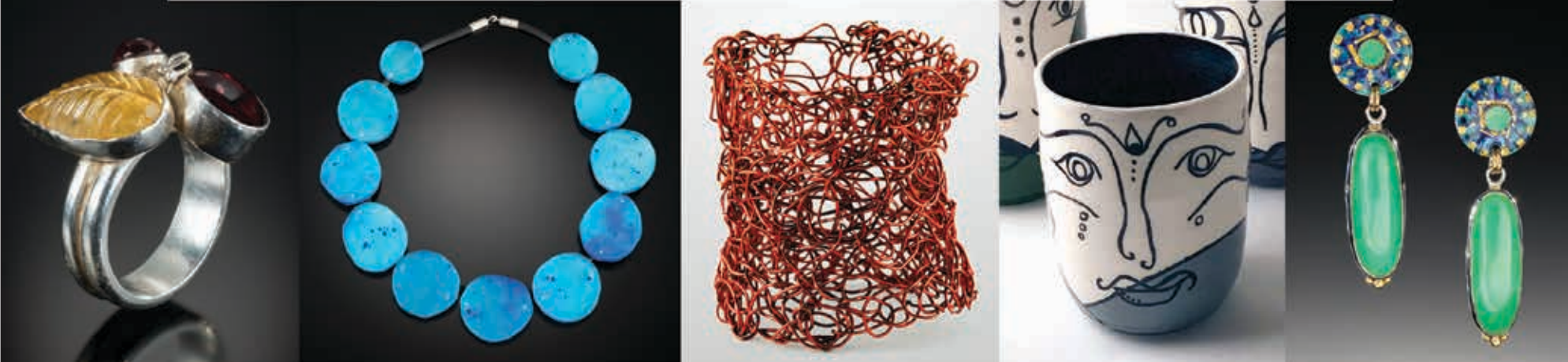
(202) 484-7700 or (202) 251-1639  
[tjones15@verizon.net](mailto:tjones15@verizon.net)

The Southwest Renaissance Development Corporation is a 501 (c)(3) nonprofit corporation serving as the fiduciary agent of The Thelma D. Jones Breast Cancer Fund.





*The 7th Ladysmiths Art Jewelry And Objects Spring Show*  
Arena Stage, 1101 Sixth St., SW, Washington, D.C.  
April 28 & 29, 2018





## Friends of the Titanic Workday



**Volunteers Welcome**  
**Saturday, April 28, 2018**  
**9:00am – 12:00 noon**  
**Titanic Memorial**

Volunteers needed for painting benches, planting annuals, and conducting a survey of the water spigots in the park.

Sign up on our website or through Facebook.

<https://www.fotmpdc.org/Events>

*Hope to see you in the Park this Spring!*


## Applications are open for the 2018 SWNA Scholarship Program

Scholarships are open to residents in Zip Code 20024 who wish to pursue, or are pursuing, any course of study at an accredited undergraduate college or university or technical institution.

The deadline is April 10, 2018.


For more information please visit  
<https://www.swnascholarship.org>






# St. Peter School

The Key to Educational Excellence since 1868



422 Third Street, SE • Washington, DC 20003  
 202-544-1618 • [stpeterschooldc.org](http://stpeterschooldc.org)



National Blue Ribbon School of Excellence



# CIVIL DIALOGUES

**THREE ENLIGHTENING CONVERSATIONS THAT WILL EXPLORE SOCIAL AND POLITICAL TOPICS THAT AFFECT US TODAY**

Announcing **Arena Forum: Civil Dialogues**. A three-part series of conversations that seek to provide an opportunity for members of the D.C. community to engage in civil discourse about social and political issues.

### Monday, March 26:

*Exploring excessive surveillance and endangered privacy*  
 What is the proper balance between our right to privacy and our need for security and free commerce?

### Monday, April 23:

*Exploring what we owe other people*  
 Should the US provide economic and political development aid — or put its own house in order?

### Tuesday, May 29:

*Exploring the future of race relations in America*  
 Is a post-racial or post-racist future a compelling vision?

## ARENA STAGE AT THE MEAD CENTER FOR AMERICAN THEATER ARLENE AND ROBERT KOGOD CRADLE | 6:30 – 8 PM

There will be a pre-dialogue reception before each event, starting at **5:30 PM** in the Main Lobby.

The event is free and open to the public; registration is required.

For more information or to register, please visit  
**[www.arenastage.org/forum](http://www.arenastage.org/forum)**



# FREE LUNCH TIME CONCERT

## The 6821 Quintet

Collaboration with composer Kunihiro Murai

March 26, 2018 at 12:10pm

at National Gallery of Art, East Building Auditorium



[Please Register Here](#)

The 6821 Quintet (cleverly named to reflect the distance from Tokyo to DC) consists of international artists coming together to fulfill the understanding that music brings disparate cultures together.

The group will put on performances during the National Cherry Blossom Festival in March, and will be showcasing their musical artistry at various venues around the DC area.



### Kunihiro Murai (composer and producer)

Kuni Murai is a Japanese composer and producer based in Los Angeles. He has written over 300 songs and 30 film scores, including Tampopo. His hit song Tsubasa wo Kudasai (Wings to Fly) is published in school music books across Japan and has been covered by hundreds of artists around the world. As the founder of Alfa Records, he has produced internationally renowned artists such as Yumin and Yellow Magic Orchestra (YMO). Today, he continues to compose music for recording artists, the stage and the screen. Most recently, he composed the musical La Comtesse de Cagliostro, which had a successful run in Tokyo.



**RYUJI UENO**  
FOUNDATION



## Because You Can Fitness

Lori Murphy

- Classes
- Personal Training
- Specialty Bootcamp Classes
- Virtual Classes
- Events
- Nutrition



202-669-9017

facebook.com/BYCLoriMurphy  
www.becauseyoucanfitness.com

# There's A Party Goin' On

BY: SHARON FLYNN

On the evening of Tuesday, Feb. 13, if you were anywhere other than Westminster Presbyterian Church for the first anniversary celebration of the DC Waterfront Village, you missed out. Any stranger strolling by would have every clue: "There's A Party Goin' On." Walk-ins were welcome in addition to the 100-plus people who had registered. The place was filled to capacity.

Fourteen exhibitors, ranging from Georgetown Home Care to



strides in our services, along with scores of programs and activities to prevent social isolation."

During the program, the stage resembled a coming together of Southwest DC's own luminaries. The welcome was by Deborah Ratner Salzberg, president of Forest City Washington, one of the major anniversary sponsors, along with JBG Smith. Ratner Saltzberg said the Village offered the kind of services that her late mother-in-law would have relished, such as the weekly trips to the grocery store. "The concept is great, and there are so many

services and activities provided through Waterfront Village for people aging in place or full of vigor and activity."

The opening address was given by DC Congresswoman Eleanor Holmes Norton. "This is the place where there ought to be a senior Village because as the neighborhood comes alive in so many ways, the last thing we want to do is see people who have lived in this neighborhood, made it grow, leave just as the neighborhood itself is growing," she said. "So it means a great deal to me that you have created a senior Village right here in Southwest Washington."

Read the rest of this story and more at <http://thesouthwester.com>

## It's Back! Free Breakfast Sundays, 8:00 to 8:45 a.m.

*Bread for Life Begins April 8, 2018*

Homemade Pancakes, Eggs, Sausages & MORE!

**ALL are welcome!**



**St. Augustine's Episcopal Church**

Community Room

555 Water St., SW

Contact: [chee-cheemathis@staugustinesdc.org](mailto:chee-cheemathis@staugustinesdc.org)



A First Class Move to District Hardware and Bike, along with other types of senior living resources, offered their services to attendees. From stem to stern, Westminster took on the navigational facade of sailing and boating. Sparkling white harbor lights and more than 100 tiny sailboats were hung from the walls to illustrate Waterfront Village's theme: navigating together. Outside, luminaries lined the sidewalk to the church, and near the entrance, hot cider was offered to wash away the chill of the evening.

"We are completely overcome with this outpouring of support from the community," said Executive Director Bob Craycraft. "This is an important year for us. We have reached our milestone goal of 100 member households and made great

## SW COMMUNITY GARDENS



## Earth, Arts, & Music Day

Join us Saturday, April 7 from 11am - 4pm at 1098 Delaware Ave. SW for our annual spring kickoff.

Activities include preparing the garden beds, weeding, facepainting, art projects for all ages, and live music from Kiss & Ride at 3pm to finish the event. Lunch will be provided.

This event was made possible thanks to :

SWBID

POCKET  
CHANGE



[WWW.SWGARDENS.ORG](http://WWW.SWGARDENS.ORG) / [SWGARDENSDC@GMAIL.COM](mailto:SWGARDENSDC@GMAIL.COM)



## ST. DOMINIC CATHOLIC CHURCH

*Serving Southwest Washington since 1852*

### CELEBRATION OF HOLY MASS

#### WEEKDAY

**Monday—Friday:** 8:00 a.m., 12:10 p.m.  
(8:00 a.m. only on a Federal Holiday)

**Saturday:** 9:00 a.m.

#### WEEKEND

**Saturday:** 5:00 p.m. Vigil

**Sunday:** 8:00 a.m., 10:30 a.m., 5:00 p.m.

### THE SACRAMENT OF RECONCILIATION

**Monday—Friday:** 11:55 a.m.

**Saturday:** 4:30 p.m.

**Sunday:** After the 10:30 a.m. Mass.

### EUCCHARISTIC HOLY HOUR

**Thursdays:** 4:45 p.m.

### ST. DOMINIC CENACLE

*A Discipleship group for Adults*

**Tuesdays:** 7 p.m. — Adoration;

7:30 p.m. — Talk/Discussion

[www.stdominiccenacle.org](http://www.stdominiccenacle.org)

### YOUNG ADULT GROUP

**Thursdays:** 7 p.m. — Adoration;

7:40 p.m. — Talk/Discussion

### UPCOMING EVENTS

#### EASTER SUNDAY OF THE RESURRECTION

**April 1 — 10:30 a.m. Mass ONLY**

#### SPAGHETTI SUPPER

**Saturday, April 7, 6:00 p.m.** in the Parish Meeting Room,  
(Mid-block E St, down the stairs)  
Proceeds benefit the Parish Poor Box.

#### DIVINE MERCY SUNDAY

**Sunday, April 8**

3:00 p.m. — Divine Mercy Devotion,  
Eucharistic Adoration and Confessions.  
5:00 p.m. — Sunday Mass

#### SACRED AND CLASSICAL

#### MUSIC RECITAL

*Experience the Divine Mercy of God through Violin and Vocal Music.*

**Sunday, April 8, 6:30 p.m.**, in the Church

#### VIDEO SERIES "INFORMED"

*A 4-part video-discussion series on the problem of pornography*

**Sunday, April 15, 22, 29, and May 6**  
6:30 p.m. — 8:00 p.m.

In the Parish Meeting Room

*St. Dominic Church is a Christ-centered, Roman Catholic, and Dominican parish for the people of Southwest, DC and beyond. Our mission is to preach the Gospel and make disciples, glorify God through the Eucharist and the other Sacraments, build up the communion of the Church, and serve others through the spiritual and corporal works of mercy.*

630 E Street, SW • (202) 554-7863 • [office@stdominicchurch.org](mailto:office@stdominicchurch.org)  
[www.stdominicchurch.org](http://www.stdominicchurch.org) • 1 block from L'Enfant Plaza Metro





SEEK  FIND

# True Love

IN ARTS & CULTURE @  
BLIND WHINO  
S W A R T S C L U B  
IN S O U T H W E S T D C



LEARN MORE @  
[WWW.BLINDWHINO.ORG](http://WWW.BLINDWHINO.ORG)

BLIND *Whino*

SOUTH WEST

ARTS  
CLUB

WASHINGTON DC





**The Southwest Waterfront and Navy Yard  
are the newest areas of Washington to enjoy  
the benefits of a senior village:**

Staff, volunteers, and vendors referred by your neighbors to help residents 62 years of age and older who wish to remain in their homes to do so with dignity and in the most cost-effective manner possible:

- |  |  |
|--|--|
| ■ Telephone check-ins                    | ■ Day trips                              |
| ■ Social and educational events          | ■ Transportation to medical appointments |
| ■ Grocery, bank, and post office shuttle | ■ Basic handyman help                    |

## APRIL EVENTS

**Tuesday, April 3, 7:30 pm**

Village Night at "Hold These Truths" - Arena Stage (G)

**Thursday, April 5, 5 - 6:30 pm**

Men's Coffee & Conversation - Tap Room at Union Stage (G)

**Friday, April 6, 1:30 pm**

Neighborhood Lunch - Agua 301, Navy Yard (G)

**Monday, April 9**

Home Barbering Service, 9 am - 1 pm  
Curry Club: 3-Course Regional Dinner, Masala Art, 6:30 pm (G)

**Wednesday, April 11, 10 am**

Wellness Seminars: Balanced Lifestyles, Harbour Square Club Room (P)

**Thursday, April 12, 4 pm**

**Membership and Volunteering Informational Meeting (P)**  
Carrollburg Condominiums - 1250 4th St SW

**Wednesday, April 18, 10 am**

Yoga Factory's Village Member Open House

**Thursday, April 19, 2 pm**

Village Book Club - Politics and Prose

**Friday, April 20, 12:25 pm**

Water Taxi to Alexandria's Torpedo Factory Art Center and Lunch

**Every Thursday, 1 pm**

Navy Yard Shopping Shuttle to Harris Teeter, Bank of America, Harry's Reserve, Wells Fargo, and U.S. Post Office

(G) = Non-Members are welcome as the guest of a Member.

(P) = Event is open to the general public.

**For more information: [www.dewaterfrontvillage.org/calendar](http://www.dewaterfrontvillage.org/calendar), call 202-656-1834, or email [events@dewaterfrontvillage.org](mailto:events@dewaterfrontvillage.org)**

Learn where you can attend a Village public meeting or support its work as a volunteer or donor\* by calling 202-656-1834 or visiting our website: [www.dewaterfrontvillage.org](http://www.dewaterfrontvillage.org)

\* Waterfront Village receives neither District nor Federal public funds. We are a local, neighborhood 501(c)(3) organization wholly self-supported by membership dues and donations. Waterfront Village is a member of the national Village to Village network and operates under the auspices of the District Office on Aging.

## AMIDON-BOWEN

*Continued from p. 2*

tute, around \$81 million of the new funding is needed just to keep up with growth in enrollment.

- In fact, adjusted for inflation, per pupil spending is now 3% less than it was nearly a decade ago, in 2009. The mayor can brag about record funding all she wants, but it doesn't take a PhD economist to know that funding that doesn't even keep pace with inflation (or enrollment growth) is really a cut.
- Last year, the mayor proposed a per-pupil funding increase of 1.5%. Only after some last-minute heroics from Councilmember Grosso was it increased to 2.38%—still dramatically less than the 3.5% recommended by OSSE [the Office of the State Superintendent of Education].
- And even as schools try to claw (unsuccessfully) anywhere near a 3.5% annual increase in the per pupil rate, we're actually around 12% below the funding recommended in the DC Education Adequacy Study commissioned by the Deputy Mayor for Education a few years ago.

Maybe we just don't have the money? Well, all of this is happening while the district is reporting record tax surpluses and continuing to implement a series

of tax cuts that won praise from Grover Norquist and *The Daily Caller*. ...

What does this say about our values? We're a supposedly progressive jurisdiction facing real challenges when it comes to closing the achievement gap and providing a high quality public education for all." —Ken M.

As the last parent letter notes, what does the current state of school funding say about our city's values and priorities? As parents, we will not sit still and tolerate cuts to our neighborhood school, even as construction cranes, The Wharf, and other new developments speak to the growing prosperity and vitality of the city.

If you also think the city should adequately fund its schools, please email Mayor Bowser ([Muriel.bowser@dc.gov](mailto:Muriel.bowser@dc.gov)), as well as Councilmembers Charles Allen, David Grosso, and Robert White ([calen@dccouncil.us](mailto:calen@dccouncil.us), [dgrosso@dccouncil.us](mailto:dgrosso@dccouncil.us), [rwhite@dccouncil.us](mailto:rwhite@dccouncil.us)), and ask them to prioritize funding for DCPS, and specifically, our neighborhood schools: Amidon-Bowen and Jefferson Middle School Academy.

Lastly, it is not enough to provide sufficient resources to our schools; the distribution of funding must be transparent and equitable. The disparities between schools in our neighborhood and those in wealthier parts of the city are significant (and would require another article to detail). For now, we leave you with the graph on page 2.



## FRIENDS OF SOUTHWEST DC

A 501(c)(3) organization in SW DC since 1998

**DONATIONS WILL BE MATCHED  
UP TO \$10,000  
By JULY 4th 2018**

***Your donations really make a difference in helping us  
provide grants for educational, community development,  
and charitable projects for the SW DC community***

Please send your tax-deductible contribution to:

**Friends of Southwest DC  
389 O Street, S. W.  
Washington, D.C. 20024**

**OR**

**Donate by credit card using [www.Razoo.com](http://www.Razoo.com) and in top right box  
for "Find Cause or Fundraiser" enter 'Friends of Southwest DC'**

***We will provide an acknowledgment for your tax records.***

**For further information, view [www.FriendsofSWDC.org](http://www.FriendsofSWDC.org)  
or contact:**

**Coralie Farlee, President, 202-554-4407  
[FriendsSWDC@yahoo.com](mailto:FriendsSWDC@yahoo.com)**

Applications for grants may be submitted at any time  
to the postal or e-mail address

***We support The Southwester through our advertising***



**BACK BY MAGICAL DEMAND**

**SAVE 40%\***

**USE CODE:  
GOBLET**

**ALL SEVEN HARRY POTTER BOOKS  
IN SEVENTY HILARIOUS MINUTES!**

**“HAD US ROARING  
WITH LAUGHTER!”**

*Washington Post*

**“CASTS THE  
PERFECT SPELL OVER  
THE AUDIENCE!”**

*The New York Times*

**POTTED  
POTTER**

THE UNAUTHORIZED HARRY EXPERIENCE  
A PARODY BY DAN AND JEFF

*The Boston Globe*  
**CRITIC'S PICK**

*Chicago Daily Herald*  
**CRITIC'S PICK**

*NEW YORK MAGAZINE*  
**CRITIC'S PICK**

*The New York Times*  
**CRITIC'S PICK**

**NOW PLAYING**

[WWW.SHAKESPEARETHEATRE.ORG](http://WWW.SHAKESPEARETHEATRE.ORG)

**202.547.1122**

 **SHAKESPEARE  
THEATRE COMPANY**

\* Offer valid for all performances April 3-15, 2018 on Premium and A Price seating only. Offer is subject to availability and not transferrable to any other show. All sales are final — no refunds or exchanges. This offer cannot be combined with any other discount. Offer is valid through April 15, 2018.



# COMMUNITY CALENDAR

## APRIL

**SUN 1, 10 - 11A.M. Easter Jazz Breakfast** at Westminster (\$2 suggested donation) **11 A.M.-12 Noon: Still We Rise Worship Service** with Bobby Felder's Big Band. Come celebrate Resurrection Sunday with old and new friends. All are welcome. **12 Noon: Children's Easter Egg Hunt.** Baskets provided. Ages: Toddlers-10. Westminster Presbyterian Church, 400 I Street SW.

**SUN 1, Southwest Neighborhood Library** closed in observance of Easter Sunday.

**MON 2-2 - 6 P.M. - AARP TAX PREPARATION,** April 2nd – 11th. Please arrive by library opening time to sign up. [Wed., Apr. 11th is the final day tax prep services will be offered at the SW Library.

**WED 4, 4:30 P.M. Wii Club.** Children ages 6-12 are invited to join us to play Wii games. Children under 9 years old must be accompanied by a caregiver. SW Library.

**WED 4, 5:30 P.M. DC Cycling Concierge Cherry Blossom Bike Ride.**Join us for a once-a-year fundraising bike ride not to be missed! This casual and fun ride around Southwest DC through the best of the blossoms! Limited to 20 people total. Register to join this memorable and relaxed pace, 2 – 2½ hour guided bicycle ride here: <https://amidonbowen.ticketspice.com/cherry-blossom-bike-for-amidon-bowen> This 6 or 7-mile ride will include several stops to include all ability levels and share collective knowledge. RSVP today.

**THURS 5, 6 -10 P.M.** WPFW Comedy Event Fundraiser. Tickets and food for sale. Westminster Presbyterian Church.

**FRI 6, 6:30 P.M. Game Night,** 1st Friday of every month. St. Augustine's Episcopal Church, 555 Water Street SW, 202-554-3222.

**FRI 6, 7:30 – 9 P.M. Friday Night Lecture: The Power of Buddhist Logic:** In this lecture will learn how Buddhists use logic and reason to develop confidence in practicing Buddha's teachings. All welcome. \$12 (\$6 for students/seniors/unemployed). **Kadampa Meditation Center DC,** 1200 Canal St. SW.

**SAT 7, 10:30 A.M. - 12:00 noon. Komen Toastmasters,** Looking to develop speaking and leadership skills? Ace a job interview? Ignite your career? Visit and see our communications and leadership program at work. Komen Toastmasters meets on the 1st & 3rd Saturday of each month. SW Library, 900 Wesley Pl SW. 202-724-4752.

**SAT 7, 2 - 5 P.M. The Preciousness of Tantra:** Conscious Living: Half Day Meditation Workshop. What does it mean to practice the Buddhist Way of Life? In this workshop, Gen Demo will give practical teachings on the core values of Buddhism and how they can play a key factor in all of our relationships and shape how we treat others. All welcome. \$25 (\$12.50 for students/seniors/unemployed) Everyone is welcome. Kadampa Meditation Center DC.

**SAT 7, 1 - 2:30 P.M. Yoga Nidra:** Meditate, Chant, Breathe, and Relax deeply with Yoga Nidra led by Pamela Wilson. Move toward healing your Mind, Body and Spirit. Bring a mat and light covering. Invite your family and friends. \$10 donation suggested. Westminster Presbyterian Church.

**SAT 7, 3:00 P.M Lego Club.** Children ages 4-12 are invited to design, create, and build structures with LEGO bricks. Children under 9 years old must be accompanied by a caregiver. SW Library.

**SUN 8, 8 - 8:45 A.M. It's Back! Free Breakfast, Sundays, Bread for Life Begins!** St. Augustine's Episcopal Church Community Room, 555 Water St., SW. Homemade Pancakes, Eggs, Sausages & MORE! *ALL are welcome!* Contact: [chee-cheemathis@staugustinesdc.org](mailto:chee-cheemathis@staugustinesdc.org)

**SUN 8, 2:30 P.M. P.A.L. (People Animals Love) Dog Visit.** Children ages 4-12 are invited to read aloud to a P.A.L. dog. Children under 9 years old must be accompanied by a caregiver.

Voices from the Holy Land 2018 Film Series presents informative and compelling documentary films by Israeli, Palestinian, American, and European film makers who seek to provide a voice to the people living in the Holy Land. The following three films will be shown at **Westminster Presbyterian Church, 400 I Street SW.** **SUN 8, 2:30 P.M. “Road Map to Apartheid”** – traces the historical rise and fall of apartheid in South Africa and why many Palestinians feel they are living in an apartheid system today, and why an increasing number of people around the world agree with them. (95 min). **4/15/18 at 2:30 P.M. “The Field”**- follows the “Roots” project – a first of its kind initiative between Palestinians and Israeli settlers working together towards coexistence and peace not through politics but rather a peoples' movement developing from the grass roots. (72 min).

**4/22/18 at 2:30 P.M. “Censored Voices”**- one week after the 1967 Six Day War, a group of young Israeli soldiers wrestle with the systematic evacuation of Palestinians, the dehumanizing nature of war, and the echoes of the Holocaust, taking an honest look at the moment Israel turned occupier. (82 min).

**MON 9, 7 P.M. ANC 6D Monthly Business Meeting.** 1100 4th Street, SW, second floor.

**TUES 10, 1:30 P.M. Literary Book Group.** Copies of April's selection, **The Snow Child** by Eowyn Ivey are available at the information desk. SW Library.

**WED 11, 10 A.M. - 12:30 P.M. Waterfront Village Wellness Seminars:** Balanced Lifestyles, Harbour Square Community Room, 500 N St SW. \$10 voluntary donation includes a light lunch; free for Village members.

**WED 11, 4:30 P.M. Karaoke Club.** Children ages 6-12 and their families are invited to join us in karaoke singing. Children under 9 years old must be accompanied by a caregiver. SW Library.

**THURS 12, 4-6 P.M. Waterfront Village Open House & Informational Meeting** for prospective members and volunteers, Carrollsburg Condominium Thelma Martin Room, 240 M St SW. Refreshments.

**FRI 13, 8 - 9:30 A.M. Councilmember Charles Allen, Ward 6 Office Hours,** The Velo Cafe at District Bike and Hardware, 730 Maine Ave. SW. NOTE NEW LOCATION.

**SAT 14, 7-9 P.M. Faith & Film presents “Miracle at St. Anna”**— During World War II, members of the U.S. Army's all-black division are stationed in the Tuscany region of Italy. Four of the soldiers become trapped behind enemy lines and separated from the rest of their unit after one of them risks his life to save an Italian boy. 2h 40m *\*Free to the Public\*Doors open at 6:30 \*Snacks and Beverages Served \*Subtitles shown for the hearing impaired.* Westminster Presbyterian Church.

**MON 16, Southwest Neighborhood Library** closed in observance of District's Emancipation Day.

**WED 18, 12 Noon Southwest Waterfront AARP Chapter April luncheon meeting.** Speakers: 1) Former Congressman Martin Frost, Vice President of the U.S. Association of Former Members of Congress. 2) Andy Litsky, Vice-Chair of Advisory Neighborhood Commission 6D. Current AARP members, prospective members, visitors, neighbors and guests are welcome. River Park-South Common Room, 1311 Delaware Avenue SW. Lunch Available- \$5. More info: [bettyjean-tolbertjones@yahoo.com](mailto:bettyjean-tolbertjones@yahoo.com) or 202-554-0901

**WED 18, 4:30 P.M.** Magic Science. Children ages 9-12 are invited to learn magic tricks. Children under 9 years old must be accompanied by a caregiver. SW Library.

**WED 18, 6:30 P.M. Fiction Lover's Book Club.** Title TBD. SW Library.

**WED 18, 6:00 P.M. Thelma D. Jones Breast Cancer Support Group Meeting.** Topic of discussion is male breast cancer survivors and men's health. Refreshments and door prizes. St. Augustine's Episcopal Church. T. Jones 202-251-1639.

**SAT 21, 10-11 A.M. Saturday Morning Meditation:** Developing our Concentration: In this class we will learn what concentration is, why it is so important, and to learn how to develop our powers of concentration through systematic training in breathing meditation. \$12 (\$6 for students/seniors/unemployed). Kadampa Meditation Center DC, 1200 Canal St. SW.

**SAT 21, 3:00 P.M. Record Store Day Craft.** Children ages 6-12 are invited to a craft celebrating Record Store Day. Children under 9 years old must be accompanied by a caregiver. SW Library.

**SAT 21, 10:30 A.M. - 12:00 noon. Komen Toastmasters,** meets on the 1st & 3rd Saturday of each month. SW Library, basement.

**TUES 24, 5:30 - 7 P.M. Theology & Brews.** All Young Adults (20s-30s) are invited to a monthly Theology & Brews gathering to explore the role of faith in our daily lives. Join us the last Tuesday of each month for brews and conversation. This month, we'll talk about the earth: how can we be stewards of the earth? How are we related to the earth and all its living creatures? Come at 5:30 P.M. to catch happy hour at The Velo Café (\$1 off pints of beer and glasses of wine) and stay from 6 – 7 P.M. for conversation. The Velo Café, 730B Maine Ave SW. *Theology & Brews is a ministry of St. Matthew's Lutheran Church (222 M St., SW). Please contact [katie@stmatthewsdc.org](mailto:katie@stmatthewsdc.org).*

**WED 25, 4:30 P.M. Trivia Challenge.** Children ages 6-12 are invited to join us to play Trivia. Children under 9 years old must be accompanied by a caregiver. SW Library.

**WED 25, 7 P.M. What can Hobbits, Hermione Granger and the Black Panther** teach us about finding meaning and purpose in life? Young professionals are invited to watch movie clips, snack on chocolate frogs and discuss. Conversation led by the Rev. Dr. Patricia Lyons. St. Augustine's Episcopal Church. Contact: [diana@staugustinesdc.org](mailto:diana@staugustinesdc.org)

**THURS 26, 6:45 P.M. ABC Committee, ANC6D.** Alcohol license applications, renewals, enforcement, and other issues. To be added to e-mail list for agenda & notifications contact: Coralie Farlee, Chair, ABC Committee, 202-554-4407, [cfarlee@mindspring.com](mailto:cfarlee@mindspring.com). 1D MPD building, 101 M Street SW.

**SAT 28, 10A.M.-3P.M. The Friends of the SW Library** will be holding a book sale. Most books are \$1 or less! We have DVD's and CDs on sale as well. On Sunday, we will hold a \$5 bag sale – fill a traditional size grocery bag (paper or reusable) with our stock and pay \$5! SW Library.

**SAT 28, 1 - 3 P.M.** Thinking About Jazz presents the life and accomplishments of Marian McPartland, Jazz Pianist and former NPR host. Marian McPartland was an English-American jazz pianist, composer and writer who received numerous awards, including a Grammy for lifetime achievements. Ellen Carter will present on this most inspiring jazz master. Light lunch served. **6 P.M. DC Legendary Musicians Fund Raiser.** Tickets and food for sale. Westminster Presbyterian Church.

**SAT 28, 1:30 P.M. (new time) Southwest Library Book Discussion.** Copies of this month's selection, The Unwinding by George Packer are available at the information desk. SW Library.

**SAT 28, 3:00 P.M. Arbor Day Crafts.** Children ages 4-12 are invited to create tree themed crafts. Children under 9 years old must be accompanied by a caregiver. SW Library.

**SUN 29, 1:30 - 4P.M. The Friends of the SW Library** will be holding a book sale. Most books are \$1 or less! We have DVD's and CDs on sale as well. On Sunday, we will hold a \$5 bag sale – fill a traditional size grocery bag (paper or reusable) with our stock and pay \$5! SW Library.

**SUN 29, 7 P.M. Westminster Presbyterian, Riverside Baptist, and Christ United Methodist** are joining together for a **Love One Another Holy Thursday service. 7 P.M.** Simple Supper and **8 P.M.** Service of Remembrance. Westminster, 400 I Street S.W.

## WEEKLY, BIWEEKLY

**ADVICE FOR LIFE MEDITATION CLASS. Sundays, 10-11 A.M.** Learn practical advice found in Buddha's teaching as methods for solving our daily problems. There is a separate class for kids ages 5 - 12 running at the same time. Everyone is welcome. \$12 per class (\$6 for students/seniors/unemployed). **Kadampa Meditation Center DC, 1200 Canal St. SW, 202-430-6540.**

**ALZHEIMER'S ASSN CAREGIVER SUPPORT GROUP. 2nd Tuesdays of the month,** 10:30-11:30 A.M. Free and open to the Public. Location: Faith Presbyterian Church. 4161 S. Capitol St SW.

**ARTY AFTERNOON, Mondays 4:30 P.M.** Join us in the Children's Room for fun arts and crafts. For children ages 4-12. Children under 9 must be accompanied by a caregiver. SW Library.

**BABY/TODDLER STORY TIME, Mondays, 10:30 A.M.** Join us for fun songs, finger plays, baby bounces and rhymes as we work together to develop early literacy skills. Designed for children ages birth to 2 years and their caregivers. SW Library.

**BASKETBALL at King Greenleaf Recreation Center, 201 N Street SW.,** Ages 6U Tuesdays and Thursdays at 5-6 P.M.; 8U Tuesdays and Thursdays at 7-8 P.M.; 10 U Tuesdays and Thursdays at 6-7 P.M.

**BLUES MONDAYS, 6 - 9 P.M., Westminster Presbyterian Church.** Various Blues musicians and singers featured each Monday. \$5. Food for sale. Schedule at <http://www.westminsterdc.org/blues.html>

**BOOK CLUB, 7 P.M. every second Thursday** at River Park. Book to read: TBA. Contact Gale Dunn Kaufmann 202-484-8432 or Email [galekaufmann@verizon.net](mailto:galekaufmann@verizon.net).

**COLOR CLUB Mondays, 7:00 P.M.** Children and their families are invited to join us for Color Club. We'll have special coloring sheets and

supplies available. Children under 9 years old must be accompanied by a caregiver. SW Library.

**COMMUNITY BREAKFAST, 9 - 11 A.M. Every 3rd Saturday,** Rear entrance of Christ United Methodist Church, 900 4th St. SW, across from SW Library. \$5.00 donation.

**DC DRAGON BOAT CLUB. 8:30 A.M., Saturdays.** Interested in meeting new people, getting into shape, and enjoying the great outdoors? Come to The Wharf Recreation Pier and join a free paddling session with the DC Dragon Boat Club. Beginners are welcome! The first three practices are free! Sign p: [www.dcdragonboat.org/](http://www.dcdragonboat.org/) Questions? [info@dcdragonboat.org](mailto:info@dcdragonboat.org).

**DIGITAL DROP-IN, 3:30 - 4:30 P.M. Tuesdays.** Help using library services on your digital device (tablet, smartphone, reader). SW Library.

**DOMESTIC VIOLENCE CLINIC, 1 - 4 P.M. Wednesdays.** Westminster Presbyterian Church.

**DPR YOUTH FOOTBALL SKILL TRAINING CAMP** – ages 6-10; Tues. Wed and Fridays 5 – 7:30 P.M., Saturdays 9 – 11 A.M., King Greenleaf Recreation Center, 201 N Street SW.

**EVENING PRAYER, Tuesdays, 6:30 P.M.,** St. Augustine's Episcopal Church.

**FEDERAL CITY RUNNERS TUESDAY NIGHT GROUP RUN, 6:30 P.M.,** Meet every Tuesday by Waterfront Metro exit (near Safeway). Run distance: 4-5 miles. Runners of all paces welcome! Run year-round in rain, snow, or shine. RSVP at [www.meetup.com/fcrunners](http://www.meetup.com/fcrunners) to receive run updates or just show up!

**FRIDAY NIGHT FISHING, 5:30-8:30 P.M.** Free event for kids and families, and fisher-folks young and old! **Where:** The docks at Diamond Teague Park (in SE across from the baseball stadium).

**GAME CLUB, 4:00 P.M. Fridays.** Children ages 6-12 are invited to join us to play board games. Children under 9 years old must be accompanied by a caregiver. SW Library.

**GIRL SCOUT TROOP 4298, 5:30-7 P.M. Wednesdays,** now in its 11<sup>th</sup> year. Our multi-aged troop has girls from kindergarten to high school. Some of the activities we do are arts and crafts, camping, tea party, business 101, step show, career exploration, badges at the beach, movies, ice cream socials and so much more. Interested? Call Monica at 202-468-9620 or Audrea at 202-744-9170. St. Augustine's Episcopal Church.

**HAND DANCING, 1 - 3:00 P.M., Saturdays** with Mr. Zeke. All ages welcome. King Greenleaf Recreation Center. 201 N Street SW. 202-645-7454.

**JAZZ NIGHT IN SW, 6 - 9 P.M.,** Fridays, Westminster Presbyterian Church. Various Jazz musicians and singers featured each Friday. \$5. Food for sale. Schedule at [www.westminsterdc.org/jazz.html](http://www.westminsterdc.org/jazz.html)

**KADAMPA MEDITATION CENTER DC, Thursdays, 7-8:30 P.M.,** Drop in Meditation Class. Redefining Success: Success can be defined in many ways, depending on what we and others feel is meaningful and important to accomplish in this life. \$12 per class (\$6 for students/seniors/unemployed). **1200 Canal St. SW, 202-430-6540.**

**Sundays 10-11 A.M.** How to Transform Your Life – Meditation Class. This series of classes will be based on the book, How to Transform Your Life, a practical manual that shows how we can develop and maintain inner peace. All welcome. \$12 per class (\$6 for students/seniors/unemployed). **1200 Canal St. SW, 202-430-6540.**

**KEYS TO FREEDOM NA Group,** Tuesdays 12-1 P.M., St. Augustine's Episcopal Church.

**The KIWANIS CLUB OF SOUTHWEST WATERFRONT, 6:30 - 7:30 P.M.,** every first and third Monday. Christ United Methodist Church, 900 4th St SW.

**MAKER CAMP. Wednesdays, 4:30 P.M.** Ages 6-12 are invited to join us for hands-on, creative workshops from 4:30 to 5:30 p.m. No registration necessary. Children under 9 years old must be accompanied by a caregiver. SW Library.

**NARFE, the National Association of Retired Federal Employees** meets the fourth Thursday of the month from September through May from 1:15 until 2:30 in the library. Hope to see you there. SW Library.

**PAJAMA STORY TIME, Thursdays, 6 P.M.** Join us for an evening

*See “Calendar,” page 11*

View our on-line calendar at [www.swna.org](http://www.swna.org)

*Submit Calendar events to [calendar@thesouthwester.com](mailto:calendar@thesouthwester.com) by the 15th of the month preceding the month it is scheduled.*



## Emergency Preparedness in SWDC— Focus Group Participants Wanted

The Southwest Neighborhood Assembly Emergency Preparedness Task Force (SWNA EPTF), with the support of graduate students from the Department of Behavioral and Community Health at the University of Maryland, is organizing two one-hour focus groups in mid-April to better gauge the ideas and concerns of SW residents regarding the state of disaster preparedness in the community. Participants will be asked several questions such as: How prepared do you think we are in SW for disaster of any kind—snow storms, hurricanes, earthquakes, floods, or a terrorist incident? What steps are you taking to prepare yourself? Do you know where to turn for disaster preparedness information? What ideas do you have to improve disaster preparedness in the District including our neighborhood of SW?

The goal is to summarize the information, discuss it with colleagues at the DC Emergency Management Agency, and then produce a summary article to be published in the June issue of *The Southwester*. In addition, EPTF will strive toward addressing the issues raised by the participants in the focus groups.

As a short reminder, EPTF is one of several task forces that make up SWNA. It started in 2011 and its vision is to build a disaster-resilient SWDC. The task force's basic mission is to organize stimulating activities throughout SW that aim to help raise disaster preparedness awareness at the individual, family, and community level. Activities hosted to date include presentations on urban search and rescue; effects of climate change; disaster resilience; family preparedness; evacuations; a flood exercise; and, for children, the Pillow Case Project.

**Please contact one of us below to join one of our focus groups on April 11 or 12 at the SW Business Improvement District office (420 4th St. SW) from 6:30 to 7:30 p.m. Snacks and soft drinks will be provided.**

MARIA AMADOR mamador@terpmail.umd.edu

KRISTI MEADOWS Kristimeadows12@gmail.com (410-978-6824)

BEN CURRAN ben@swana.org (202-570-0427)

THELMA JONES thelma@swana.org (202-251-1639)



# HIRING FAIR

SATURDAY, APRIL 21, 2018  
11 AM – 4 PM  
KING GREENLEAF REC CENTER  
201 N ST SW, WASHINGTON, DC 20024

**PART-TIME OPPORTUNITIES:**

- GUEST SERVICES REPRESENTATIVES
- TICKET TAKERS
- EVENT USHERS

**JOB REQUIREMENTS:**

- Must be able to pass background check and drug screen provided by D.C. United
- Must be at least 18 years old
- Must have a valid government issued photo id proving D.C. Residency (e.g. unexpired driver's license)
- Must be well-groomed and neat in appearance
- Must have a resume that is easily readable, typed, accurate and error-free
- Must be willing to work a flexible schedule, including evenings and weekend hours

**DRESS PROFESSIONALLY FOR AN INTERVIEW.**  
Candidates must dress professionally for an interview, and complete the following to participate:

- Fill out the D.C. United employment application at [dcunited.com/matchday/stadium/guest-services/apply](http://dcunited.com/matchday/stadium/guest-services/apply) or you may fill out the application day of.
- Bring resume to the scheduled interview time.




## 2018 Kids Tennis Day

**The National Cherry Blossom Festival invites you to play among the blossom at the 2018 Kids Tennis Day! This FREE event is open to kids of all ages with tennis games and fun activities.**

**Date:** Sunday, March 25, 2018

**Time:** 2pm-4pm

**Venue:** East Potomac Tennis Center  
1090 Ohio Dr. SW, Washington, DC

**Tennis rackets will be provided.**

Presented by  
**aetna**

**For more on the goings on of Southwest this month, see [TheSouthwester.com](http://TheSouthwester.com) for stories on SWNA's Youth Activities Task Force and Technology Task Force, as well as a wrap up from the Annual Black History meeting.**

**[www.TheSouthwester.com](http://www.TheSouthwester.com)**

## CALENDAR

*Continued from p. 10*

story time where pajamas are encouraged but not required. These evening programs are designed to delight children of all ages. Children under 9 years old must be accompanied by a caregiver. SW Library.

**PICKLE BALL, Tuesdays, 10:30 A.M. - 12:30 P.M.** King Greenleaf Recreation.

**PRESCHOOL STORYTIME, Wednesdays, 10:30 A.M.** Join us for books, songs, rhymes, and fingerplays as we continue to strengthen early literacy skills while enjoying stories together. An easy craft activity follows story time each week. Designed for children ages 3 to 5 and their caregivers. SW Library.

**SEATED YOGA TWICE A WEEK** at Westminster Presbyterian Church, **MONDAYS from 11:00 A.M. - 12 noon** and **WEDNESDAYS from 4:00 - 5:00 P.M.** Pamela Wilson guides a gentle series of movements designed to free the joints and ease the mind. This is part of Westminster's Wellness program. 400 I Street SW.

**SENIOR BINGO, Mondays & Thursdays, 1 - 3 P.M.,** King Greenleaf Recreation Center.

**SOUTHWEST RENEWAL AA Group,** Mondays 7:30 P.M. and Thursdays, 7:00 P.M. St. Augustine's Episcopal Church.

**THE SOUTHWEST WATERFRONT AARP CHAPTER #4751,** Monthly luncheon meetings are held every third Wednesday at noon. For further information, contact Chapter President Betty Jean Tolbert Jones, bettyjeantolbertjones@yahoo.com or 202-554-0901.

**TEEN CLUB,** Mondays, 6:30 - 8 P.M., King Greenleaf Recreation Center.

**TINY TOTS ART CLASS,** Mondays, 10:30 - 11:30 A.M., ages 15 months-3 years, King Greenleaf Recreation.

**TINY TOTS NEED RECREATION,** Wednesdays, 10:30 - 11:30 A.M., King Greenleaf Recreation.

**SW FREEWAY, NA,** Wednesdays, 7 - 8 P.M., Westminster Presbyterian Church.

**WASHINGTON STAMP COLLECTOR'S CLUB, 7 - 9 P.M.** First and Third Wednesday each month. Buy, trade and sell stamps. Refreshments. **Christ United Methodist Church.**

**ALL-LEVELS YOGA CLASS every Wednesday from 8 - 9:00 A.M.** Bring a mat if you have one. No set charge; donations welcomed. For more information, call the instructor, Pamela Wilson, 202-746-6654 or email: wilsonpj108@verizon.net. St. Augustine's Episcopal Church.

**YOGA FOR ADULTS and TEENS, 6:30 P.M. Tuesdays.** All levels welcome. Bring your own mat or use a library provided mat. SW Library.

**YOGA IN THE WATER: ALL-LEVELS CLASS Tuesdays and Thursdays from 9:30 - 10:30 A.M. and Sundays from 12:30 - 1:30 P.M.** with Pamela Wilson at Waterside Fitness and Swim Club, 901 6th Street, SW. Try another approach to Yoga! \$10 for class/day pass. For more information, call Waterside Fitness and Swim Club, 202-488-3701.

**YOUNG LADIES ON THE RISE, 5:30 - 7 P.M., Wednesdays,** Michelle Edmonds, Ages 6-14. King Greenleaf Recreation Center.

**ZUMBA, 7:30 P.M. Discontinued until further notice.** SW Library.



## St. Augustine's Episcopal Church

*"A Spiritual Presence on DC's Southwest Waterfront"*

*Wherever you are on your faith journey and in your life ... what ever questions, doubts and experiences you come with ... we welcome you to join us!*

### HOLY WEEK AND EASTER SERVICES

**Palm Sunday • Sunday, March 25 • 9:30 a.m.**

Service of Holy Eucharist

Blessing of the Palms with Procession and a dramatic Reading of the Passion of Christ.

**Maundy Thursday • Thursday, March 29 • 7:00 p.m.**

A 'Last Supper' Meal with the Service of Footwashing, Eucharist and Stripping of the Altar

**Good Friday • Friday, March 30 • 12:00 p.m.**

Traditional three hour Good Friday Service

1st Hour – Pergolesi's Stabat Mater performed with

traditional Stations of the Cross

2nd Hour – Walking The Way of The Cross through the Waterfront Community

3rd Hour – Contemplation and Prayer with sacred music

**Easter Vigil • Saturday, March 31 • 7:00 p.m.**

Lighting of the New Fire, Reading of Salvation History, and First Eucharist of the Resurrection

**Easter Sunday • Sunday, April 1 • 10:00 a.m.**

Festive Easter Eucharist Followed by Reception and Easter Egg Hunt

*The Rev. Martha Clark, Rector*

202-554-3222 • [www.staugustinesdc.org](http://www.staugustinesdc.org)

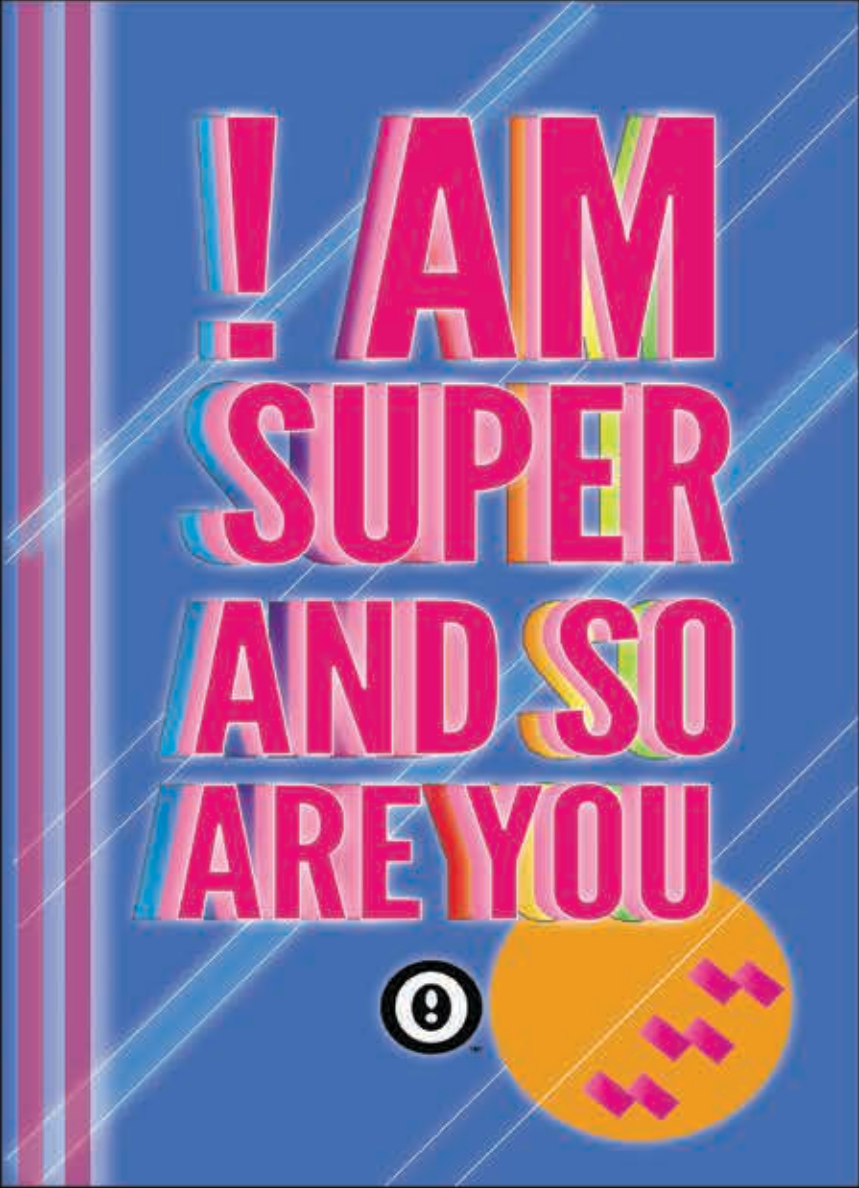
[rector@staugustinesdc.org](mailto:rector@staugustinesdc.org)

[@StAugustinesDC](https://twitter.com/StAugustinesDC)

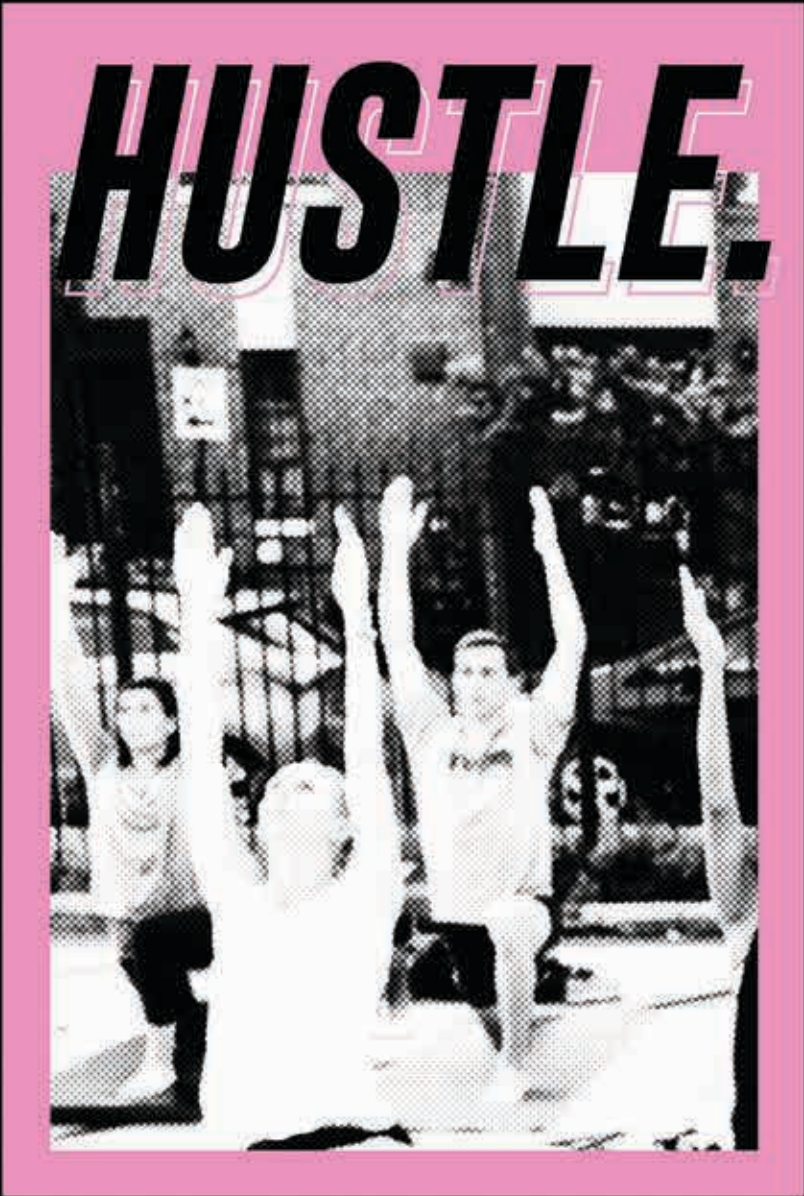
**Sunday  
Worship**  
*Service of Holy  
Communion*  
**9:30 a.m.**  
555 Water St., SW  
*Sunday School*  
**9:30 a.m.**  
"Embracing  
our diversity  
we are  
searchers for  
Justice,  
Truth  
and Beauty ...  
aware of  
and  
responding  
to community  
need."



SUPERWAXX



NO KINGS COLLECTIVE



NOMÜNOMÜ



## BRAND NEW | SW

The Hirshhorn joins with DC's dynamic art scene to pay tribute to the pioneering art practices of the 1980s. Washington-based artists No Kings Collective, NoMüNoMü, and SUPERWAXX created these branded graphic posters, which were inspired by *Brand New: Art + Commodity in the 1980s*, an exhibition that explores an iconic decade when artists blurred the boundary between art and marketing.

*Brand New SW* is part of *Hirshhorn in the City*, the Museum's initiative to bring contemporary art beyond the gallery walls and connect artists and curators to DC neighborhoods.

#HirshhornInTheCity  
[hirshhorn.si.edu/InTheCity](http://hirshhorn.si.edu/InTheCity)

SWBID  
Smithsonian

HIRSHHORN  
In The City